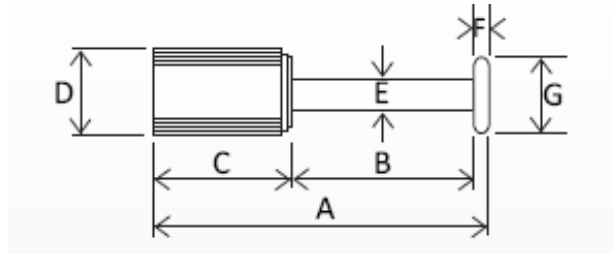


SatuLock



Dimension



Type	A (mm) (inches)	B (mm) (inches)	C (mm) (inches)	D (mm) (inches)	E (mm) (inches)	F (mm) (inches)	G (mm) (inches)
SatuLock	67 2.64	34 1.34	28 1.10	22 0.87	8 0.31	5 0.20	18.5 0.73

Specification

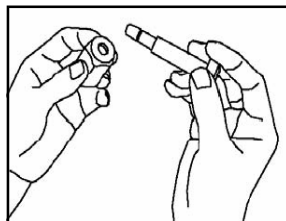
Material : High grade steel, all components are zinc coated Tensile Strength : in excess of 1000kgs/2205lbs
 Format : Packages of 10
 Temperature : -40 to 110°C / -40 to 230°F

Packaging

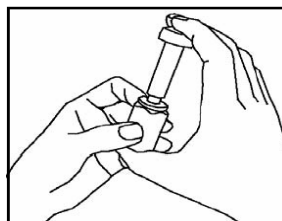
Product	Qty per Carton		Inner Carton Dimensions – mm				Outer Carton Dimension— mm				Weight—kg	
	Inner Carton	Outer Carton	L	W	H	V(M ³)	L	W	H	V(M ³)	Inner Carton	Outer Carton
SatuLock	200	-	230	185	180	0.008	-				10.68	-

Product	Qty per Carton		Inner Carton Dimensions – inches				Outer Carton Dimension—inches				Weight—lb	
	Inner Carton	Outer Carton	L	W	H	V(Ft ³)	L	W	H	V(Ft ³)	Inner Carton	Outer Carton
SatuLock	200	-	9.05	7.28	7.08	0.28	-				23.55	-

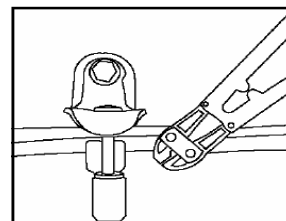
Application



1. Place pin into barrel



2. Press down to seal



3. Use bolt cutter to remove